



HANDHELD LASER CLEANING DEVICES PEAK NANO 200 | 300 | 500

The information reserves the right to be modified without prior notice.

INDEX

- 1. THE FUTURE OF INDUSTRIAL SURFACE CLEANING**
- 2. NANO 200
COMPACT. PRECISE. EFFICIENT.**
- 3. NANO 300
VERSATILE. BALANCED. RELIABLE.**
- 4. NANO 500
POWERFUL. INDUSTRIAL. HIGH-PERFORMANCE.**
- 5. ONE SERIES. THREE POWER LEVELS**

THE FUTURE OF INDUSTRIAL SURFACE CLEANING

Laser cleaning is redefining how industries approach rust removal, weld seam preparation, and surface restoration. The PEAK Nano Series delivers high-precision, non-contact cleaning with zero abrasives and no chemical waste.



NON-CONTACT PROCESS



NO CHEMICALS



MINIMAL HEAT IMPACT



PRECISE, CONTROLLABLE CLEANING

NANO 200

COMPACT. PRECISE. EFFICIENT.

The Nano 200 is ideal for gentle surface cleaning and weld seam preparation. Its compact air-cooled design makes it highly portable and easy to integrate into smaller production environments.

Product Description:

The PEAK Nano 200 is ideal for gentle surface cleaning of various materials. It is especially designed for: Rust removal, cleaning of weld seams

The unit is very easy to handle and compact, thanks to its air-cooling system.

Technical Specifications:

Laser Source:	Pulsed nanosecond laser (Maxphotonics)
Power: Optics:	2D Scanner
Cooling:	Air Cooled
Application:	Cleaning of weld seams & small components
Materials:	All metallic materials
User Interface:	Touchscreen
Dimensions:	610 x 265 x 878 mm
Weight:	25 kg

This is a Class 4 laser. Appropriate protective equipment is mandatory. During operation, prescribed laser safety measures must be strictly followed, as laser radiation can cause irreversible damage to people and the environment if safety rules are ignored.



How It Works:

Surface contaminants are removed using very short laser pulses in the nanosecond range. By concentrating energy into an extremely short time span, a very high-power peak is generated without continuous heat input. This allows dirt to be removed effectively without damaging or removing the underlying material. The 2D scanner enables different cleaning patterns, making the Nano 200 suitable for various workpiece geometries.



NANO 300

VERSATILE. BALANCED. RELIABLE.

The Nano 300 delivers increased performance while maintaining a compact footprint. Designed for broader industrial use, it offers enhanced flexibility for mid-range cleaning requirements.

Product Description:

The PEAK Nano 300 specialises in the gentle surface cleaning of various metallic materials. Its key strengths are rust removal and the cleaning of weld seams. The system is highly user-friendly and, thanks to its air-cooling design, remains compact and easy to handle

Technical Specifications:

Laser Source:	Pulsed Nanosecond Laser (MaxPhotonics)
Power: Optics:	2D Scanner
Cooling:	Air Cooled
Application:	Cleaning of weld seams & small components
Materials:	All metallic materials
User Interface:	Touchscreen
Dimensions:	630 x 370 x 540 mm
Weight:	50 kg

This is a Class 4 laser. Appropriate protective equipment is mandatory. During operation, prescribed laser safety measures must be strictly followed, as laser radiation can cause irreversible damage to people and the environment if safety rules are ignored.



How It Works:

During laser cleaning, surface contaminants are removed by very short laser pulses in the nanosecond range. By concentrating the energy into such a short time span, an extremely high peak power is generated without continuous heat input. This allows contamination to be removed effectively without damaging or removing the underlying material. By using a 2D scanner, the Nano 300 can generate different cleaning patterns and is therefore suitable for a wide range of workpiece geometries.



+27 (11) 397-6357



info@factorysmart.co.za



factorysmart.co.za

NANO 500

POWERFUL. INDUSTRIAL. HIGH-PERFORMANCE.

With 500W output and a high-speed 2D scanner, the Nano 500 is built for demanding industrial environments requiring efficient rust and paint removal.

Product Description:

The PEAK Nano 500 is ideally specialized for the gentle surface cleaning of various materials. The removal of rust and the cleaning of weld seams are the key strengths of the Nano 500. The system is very easy to handle and, thanks to its air-cooling system, pleasantly compact.

Technical Specifications:

Laser Source:	Air-cooled 500 W Pulsed Nanosecond laser
----------------------	---

Power: Optics:	2D high-speed scanner, max. 116 mm deflection
-----------------------	--

Power Supply:	230V 2kW
----------------------	-----------------

Application:	Cleaning of weld seams & small components
---------------------	--

Materials:	Removal of rust and paint from various materials All metallic materials
-------------------	--

User Interface:	Touchscreen, safety interface, distance sensor
------------------------	---

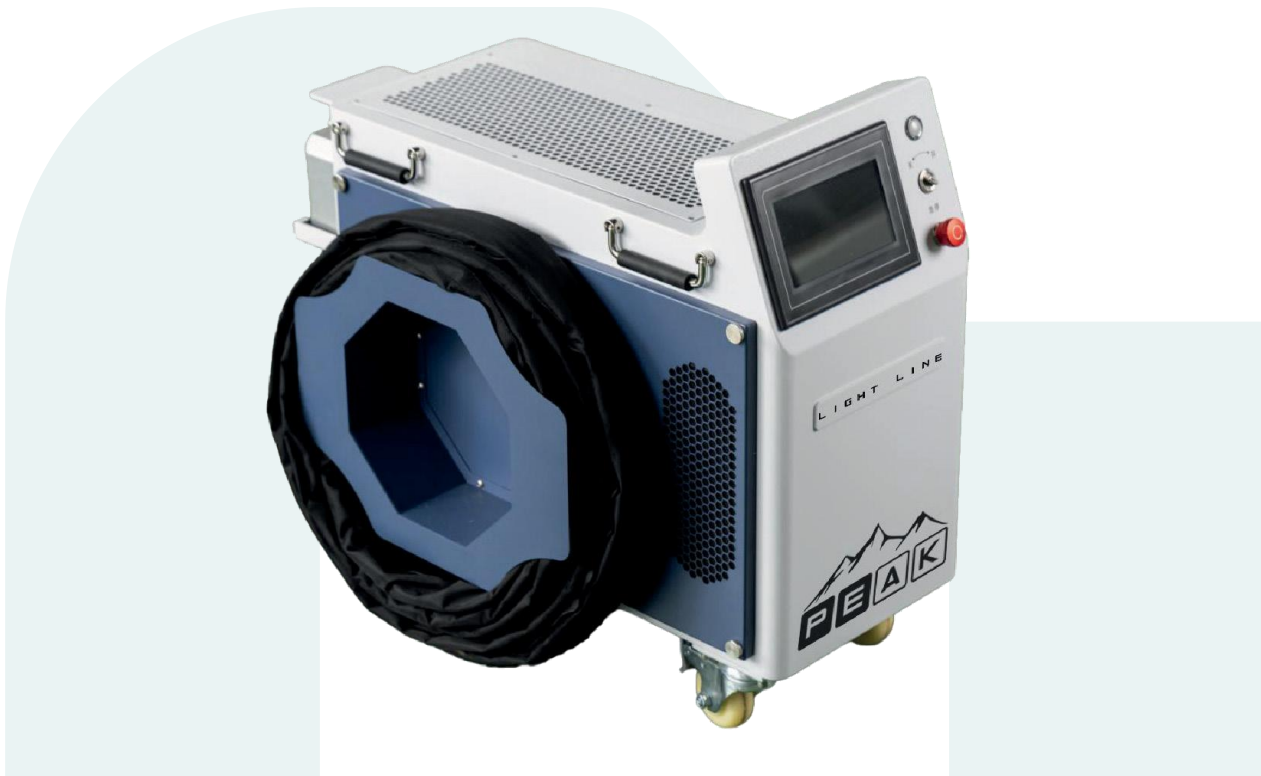
Dimensions:	770 x 428.5 x 656 mm
--------------------	-----------------------------

Weight:	56 kg
----------------	--------------



How It Works:

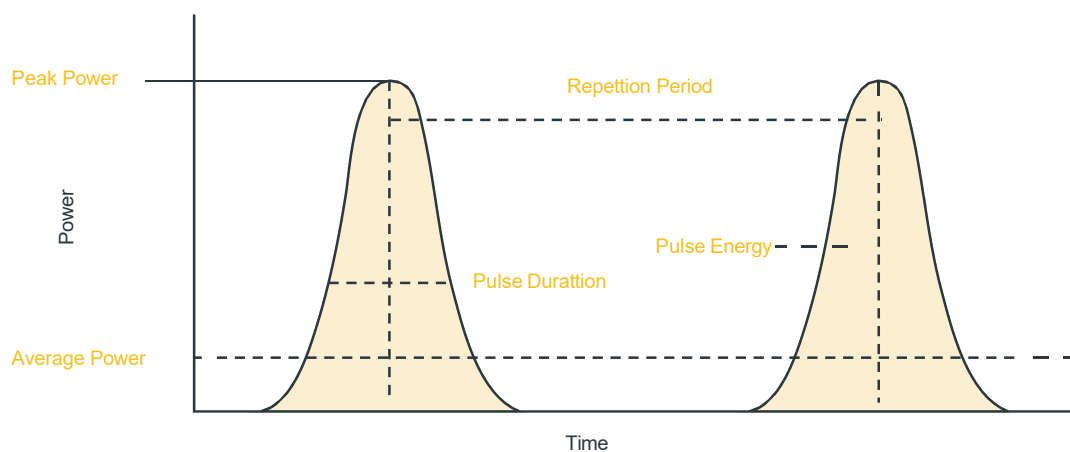
During laser cleaning, surface contaminants are removed by very short laser pulses in the nanosecond range. By concentrating the energy into such a short time span, an extremely high peak power is generated without continuous heat input. This allows contamination to be removed effectively without damaging or removing the underlying material. By using a 2D scanner, the Nano 500 can generate different cleaning patterns and is therefore suitable for a wide range of workpiece geometries.



ONE SERIES. THREE POWER LEVELS.

Whether you require precision cleaning or heavy-duty rust removal, the Nano Series offers scalable performance to match your application.

Model	Nano 200	Nano 300	Nano 500
Best For	Light precision	Medium-duty	Heavy-duty
Cooling	Air-Cooled	Air-cooled	Air-cooled
Power Optics	2D Scanner	2D Scanner	2D high-speed Scanner
Weight	25 kg	50 kg	56 kg
	Compact precision cleaning	Balanced industrial versatility	Maximum performance output

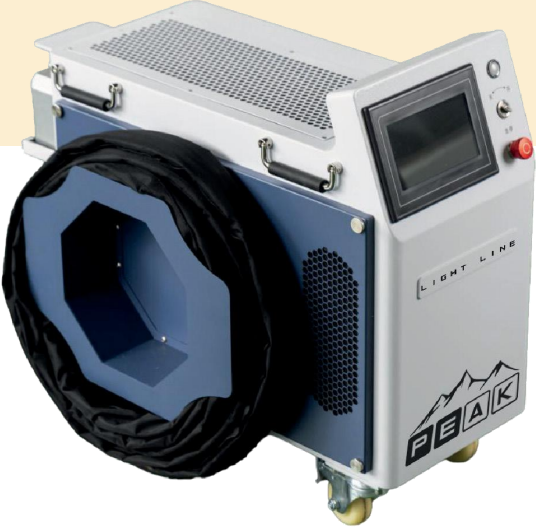


WHICH ONE IS RIGHT FOR YOU?

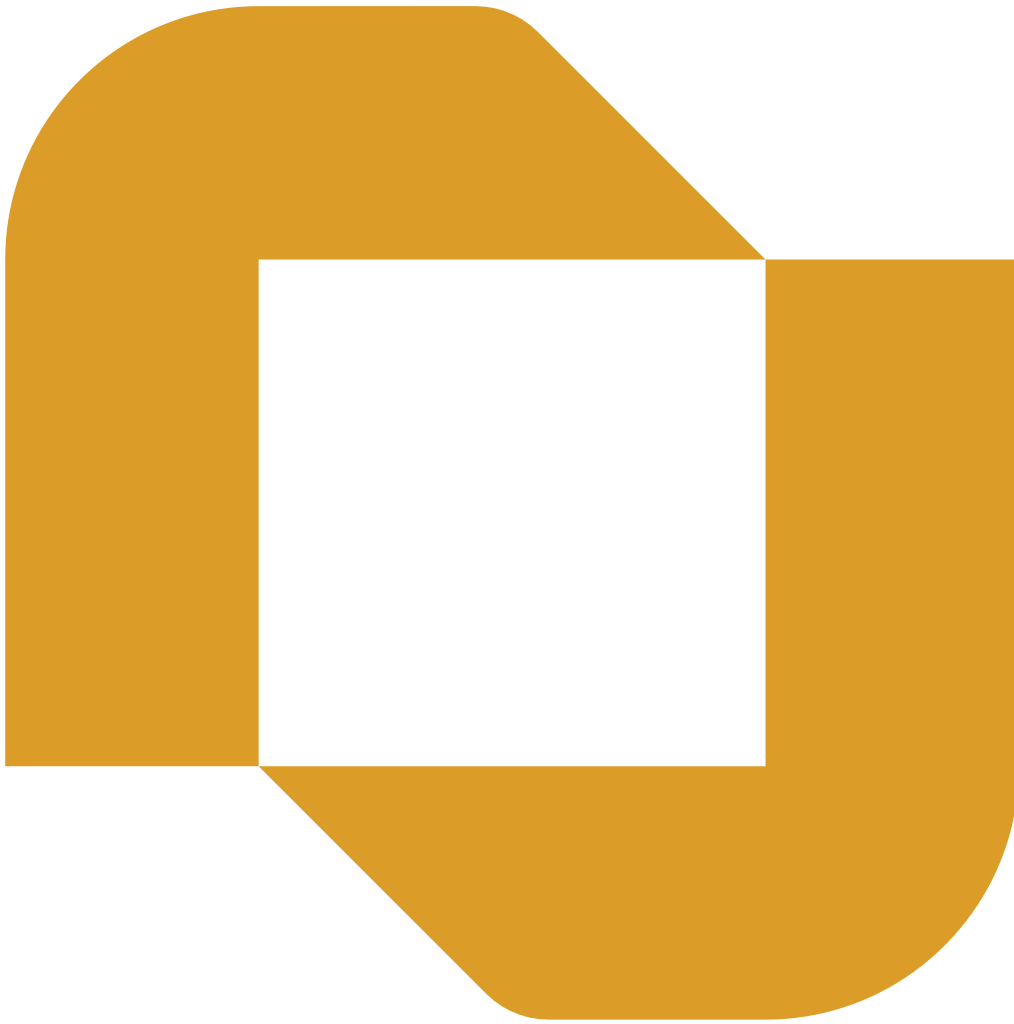


Nano 200

Nano 300



Nano 500



 **+27 (11) 397-6357**

 **info@factorysmart.co.za**

 **factorysmart.co.za**

 **Unit B1B Isando Business Park, C/O Hulley and Gewel Str. Kempton Park, 1619**